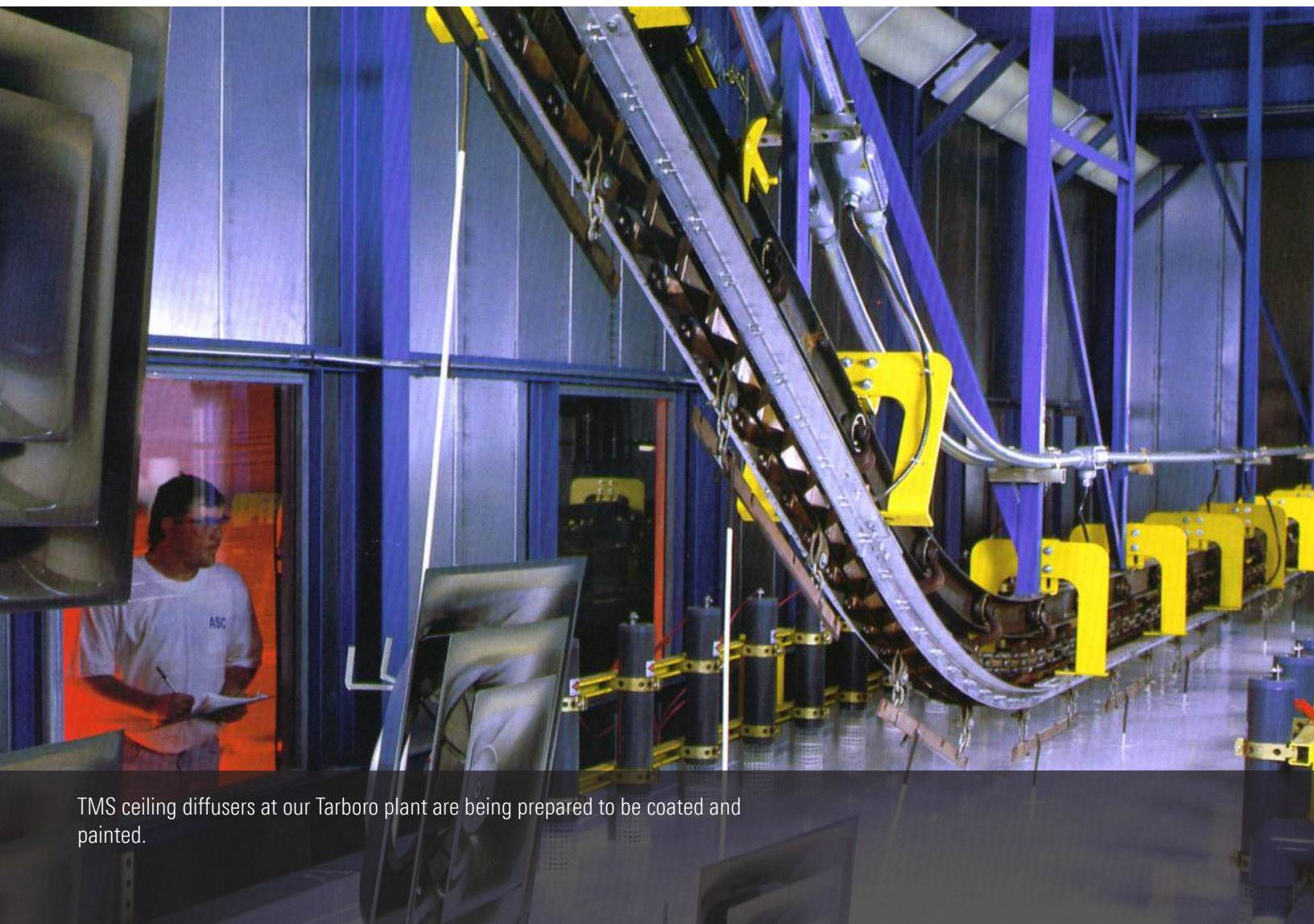




# Color Finish Selection Guide

ADVANCING THE SCIENCE OF AIR DISTRIBUTION





TMS ceiling diffusers at our Tarboro plant are being prepared to be coated and painted.

- 03 Overview
- 04 GRD Finish Options
- 06 Woodgrain Finishes
- 07 700 Series Finishes



## Overview – Color & Finish Options

SELECTING THE RIGHT COLOR TO FINISH YOUR PROJECT IS EXTREMELY IMPORTANT

Décor can be defined as the style or mode of decoration of a room or building. It is usually one of the final pieces that allows spaces to stand apart from one another. HVAC products can either add to or distract from the overall look and feel. It is imperative to not only select the proper air distribution method, but equally important as to how it will appear in the finished application.

The Titus Color-Finish Selection Guide is filled with several finish options for our HVAC products. We have a wide selection to choose from including recently introduced Woodgrain and Metallic finishes too! The best way to see how our finishes will appear on our products is to request a sample. If you would like to see a sample of the finish, please contact your Local Titus Representative for more information.



### STANDARD WHITE FINISH

The standard Titus #26 British White finish consists of an acrylic enamel applied by means of a state-of-the-art, electro-deposition painting system. This process completely cleans the product through a multi-stage rinse cycle, applies opposite electrical charges to the product and the bath of liquid paint, and then totally submerges the entire product in the paint bath. This ensures complete coverage of the entire product, even

#26 White



### ENVIRO-THERM®

ENVIRO-THERM® is a durable, alkyd enamel which is spray-applied and baked on, much like the finish on a household appliance. This mar-resistant finish has good surface durability and can be matched to a paint sample for a nominal charge. Pencil hardness is HB to 2H. Salt spray resistance is 175 hours.\* The #01 aluminum coating is formulated with suspended aluminum particles.

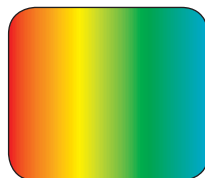
#84 Black



#01 Aluminum



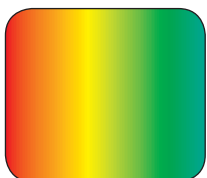
#20 Custom



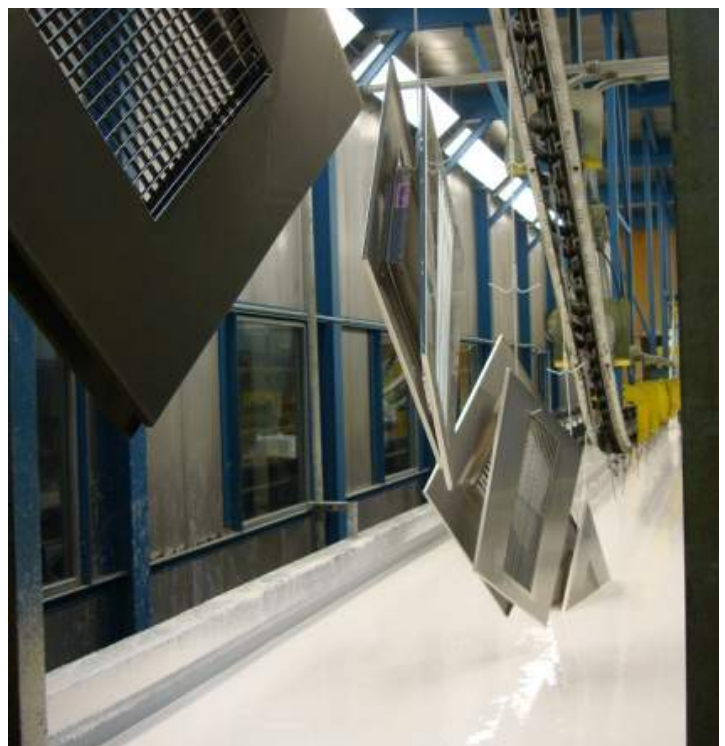
### ENVIRO-THANE®

The Titus Enviro-Thane® finish is a tough, baked-on high-solids enamel coating that provides superior surface durability in rough-handling environments. This hard coating resists scratching, chipping and abrasion. Color matching to a paint sample is available. Applications may include high traffic areas, gymnasiums, kitchens, industrial shops and hospitals. Enviro-Thane coating on phosphated steel resists a salt spray test for 500 hours\* and has a hardness range of H to 2H.

#21 Custom



on hidden metal surfaces and edges. The coating is finally cured by baking at 315°F for 30 minutes to provide a tough and durable surface. This process assures uniform quality on a consistent basis. The coating has a pencil hardness ranging from HB to H and is corrosion resistant to 100 hours in a salt spray test.\*



**\*Salt spray test data based on phosphated steel tested per ASTM B117.**

The colors on this chart will vary to the actual product. For a more accurate color, ask your Titus representative for a color chip sample.

© 2014, Air System Components LP. All rights reserved.

ANODIZED FINISHES

Anodizing is an electrolytic treatment which converts the outer layer of aluminum material to a ceramic shell of aluminum oxide. This coating increases the corrosion and weather resistance and resists soiling. It is suitable for interior and exterior applications. Available for many aluminum products, the anodizing color may vary slightly from part to part or from product to product because of variables inherent in the anodizing process.



MILL FINISH & STAINLESS STEEL

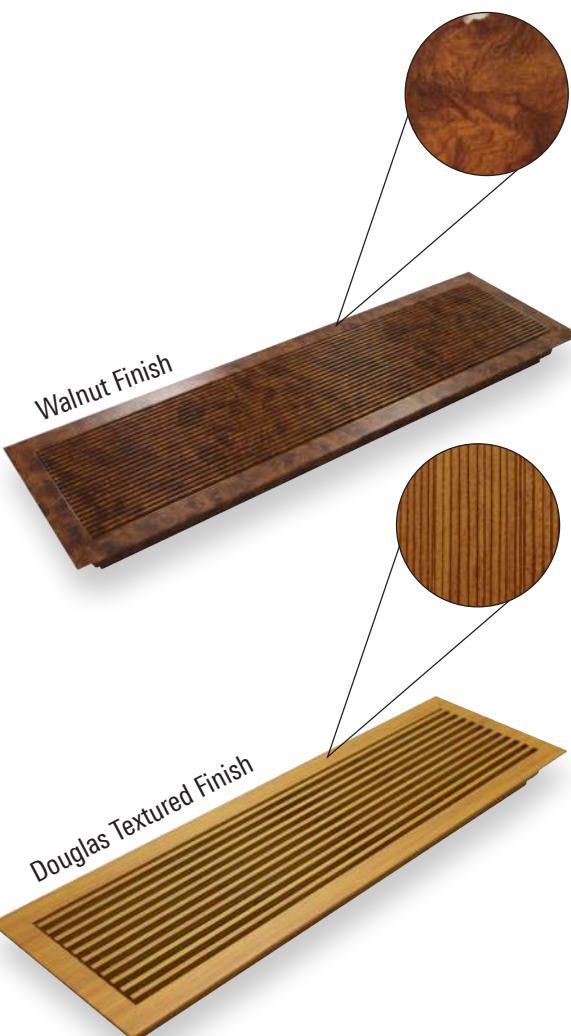
Sheet metal with no surface coating or treatment is referred to as Mill Finish because the material appears as it did straight from the steel mill or aluminum mill. Minor variations in surface appearance are normal due to processing variables and handling. Mill finish is available for aluminum and stainless steel products. For highly corrosive or sanitary

applications, a number of products are available in 304 stainless steel. For the ultimate in corrosion resistance, especially in high-chlorine atmospheres, some products may also be available in 316 stainless steel. Contact your Local Titus Representative for more information.



WOODGRAINS

Woodgrain finishes may vary slightly from the samples shown and are available in smooth or textured finishes. Woodgrain coatings are corrosion resistant to 3000 hours\* in a salt spray test with a pencil hardness of F. For a complete listing of woodgrain finish options, please download the Woodgrain Finish Brochure available on the Titus website or contact your Local Titus Representative for a woodgrain chip sample.



Mahogany #2401	Maple Textured	Mediterranean	Walnut Textured
Revere Nevada	American Oak	Cherry	Mahogany #2507 Textured
Australian Cypress	Knotty Pine	Burlwood	Amber Bamboo
Revere	American Nut	Mahogany #1802	English Walnut/DNL Tones
Dark Nut	Douglas	Wide Grain	Straight Cherry
Oak Textured	Light Oak	White Marble	Light Travertine

METALLIC FINISHES

Titus 700 Series finishes are a new offering of metallic finishes designed to offer a unique touch to the HVAC product. The coating provides superior surface durability in rough-handling environments. This hard coating resists scratching, chipping and abrasion. 700 Series finishes resist a salt spray test for 1500 hours\* and have a pencil hardness of F.

#701 Black Texture



#703 Satin Black



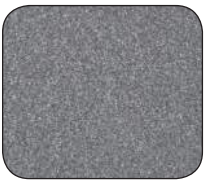
#704 Semi Gloss Black



#705 Gloss Black



#706 Storm Gray



#707 Ultra Chrome



#708 Patrician Bronze



#709 Oil Rubbed Bronze



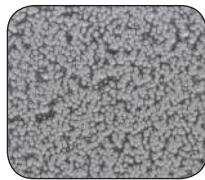
#710 Sparkle Silver



#711 Stardust Silver



#712 Silver Hammertone



#713 Exterior Copper Vein



#714 Bronze Card



#716 OB Gold



#717 Exterior Silver Vein





ADVANCING THE SCIENCE OF AIR DISTRIBUTION

605 Shiloh Rd.  
Plano, Texas 75074  
ofc: 972.212.4800  
fax: 972.212.4884  
web: [www.titus-hvac.com](http://www.titus-hvac.com)

Redefine your comfort zone.™ | [www.titus-hvac.com](http://www.titus-hvac.com)

